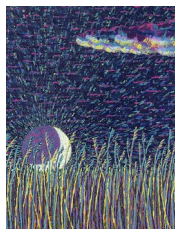
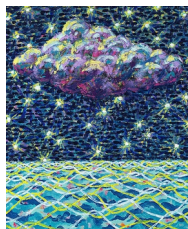


SUSAN INGLETT GALLERY AT THE DALLAS ART FAIR BOOTH B5



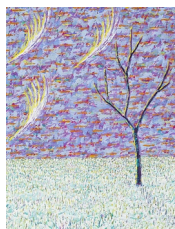
BENJAMIN DEGEN
Ground/Relay, 2019
Oil on canvas
24 x 18 in.
(BD0213)



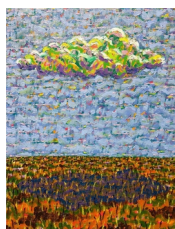
BENJAMIN DEGEN
Signal/Tailing, 2019
Oil on canvas
20 x 16 in
(BD0212)



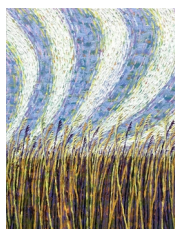
BENJAMIN DEGEN
Top Down/Sound, 2019
Oil on canvas
24 x 18 in.
(BD0211)



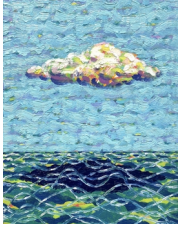
BENJAMIN DEGEN
Lay Up/Underfoot, 2019
Oil on canvas
24 x 18 in.
(BD0210)



BENJAMIN DEGEN
Long Line/Run Low, 2019
Oil on canvas
24 x 18 in.
(BD0209)



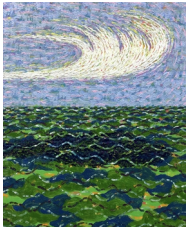
BENJAMIN DEGEN
Hard Try/For Now, 2018
Oil on canvas
24 x 18 in.
(BD0202)



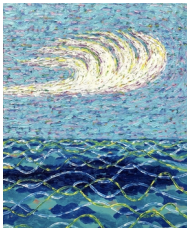
BENJAMIN DEGEN
Over Time/Louder, 2018
Oil on canvas
16 x 12 in.
(BD0162)



BENJAMIN DEGEN
Personae/Clean Break, 2018
Oil on canvas
20 x 16 in
(BD0159)



BENJAMIN DEGEN
Zero Out/New Lots, 2018
Oil on canvas
20 x 16 in
(BD0155)



BENJAMIN DEGEN
Unity Gain/All Out, 2018
Oil on canvas
20 x 16 in
(BD0154)



RYAN WALLACE
Unlanding VII, 2018
Oil, enamel, acrylic, canvas,
aluminum, fiberglass tape on canvas
48 x 60 in. Sheet
49 1/4 x 61 1/4 in. Frame
(RW0213)



RYAN WALLACE
Unlanding VIII, 2018
Oil, enamel, acrylic, canvas,
aluminum, fiberglass tape on canvas
48 x 36 in.
(RW0211)



RYAN WALLACE
Unlanding IV, 2018
Oil, enamel, acrylic, canvas,
aluminum, fiberglass tape on canvas
60 x 72 in.
(RW0209)