

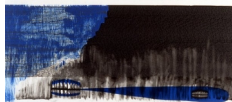
I.C. EDITIONS 25th ANNIVERSARY EXHIBITION
10 December – 28 January 2017

WINDOW



JESSICA STOCKHOLDER
With Your Salad, 2006
Plastic cooler, brushed aluminium wall sconce,
light fixtures, extension cord, polyester resin,
fabric
12 x 12 1/2 x 16 1/2 in.
Edition of 30

RECEPTION



RONA PONDICK
I want, 1996
Hard cover cloth bound artist's book
printed in lithography
11 3/8 x 15 1/8 in.
Book Edition of 25, 4 page double page
accordion fold sheets
Print Edition of 10, portfolio of 5



ALLAN MC COLLUM
Visible Markers, 1997
Polymerized pigmented concrete
2 x 8 x 2 1/2 in.
Unlimited/1693-1698



ERIKA ROTHENBERG
GREETINGS, 1993
Screenprint
8 1/2 x 6 in.
Edition of 125, portfolio of 5



ALLAN MC COLLUM
More Visible Markers in Twelve Exciting Colors, 2000
Painted TufCal
4 diameter x 1 3/4 in. high
Unlimited



BARBARA BLOOM
A Birthday Party for Everything, 1999
Mixed media
18 1/4 x 11 x 4 1/2 in.
Unlimited



CLAES OLDENBURG
N.Y.C. Pretzel, 1994
Screenprint on cardboard
7 x 7 x 1/2 in
Unlimited

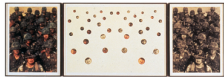


DIAMOND/LEWITT/WEINER
Do-It-Yourself, 1993
Mixed media
12 x 10 1/2 x 1 in.
Edition of 125, signed

MAIN GALLERY



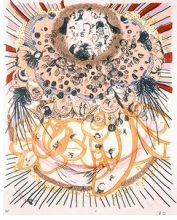
ALLEN RUPPERSBERG
Reminders, 1991
Mixed media
48 x 30 x 29 1/2 in.
Edition of 12



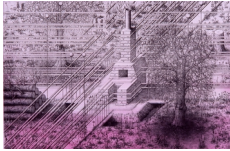
ANNETTE LEMIEUX
Stolen Faces, 1991
Lithograph in three parts
30 1/4 x 88 in (triptych)
Edition of 26, portfolio of 3



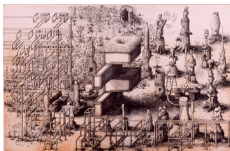
MARCEL DZAMA
casualties and hypocrites, citizens of regimentation, scheme of the circles of battle, the movement, the avant-guard army, 2004
Screenprint
22 3/8 x 20 1/4 in.
Edition of 26, portfolio of 5



SIMONE SHUBUCK
makeout, heros?, Ottoman, pouter, schlupes,
2006
Lithograph
Various sizes
Edition of 40, boxed portfolio of 6



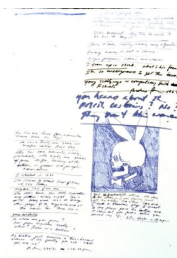
PAUL NOBLE
A, 2002
Etching
26 x 35 1/2 in.
Edition of 30



PAUL NOBLE
Paul's Place, 2002
Etching
26 x 35 1/2 in.
Edition of 30



ANNA GASKELL
Atonement, 2007
Intaglio with chine collé on Arches Cover
White and Handmade Gampi Natural
22 1/2 x 18 in.
19 x 21 in.
Edition of 10, portfolio of 9



RICHARD PRINCE
(no title), 1991
Lithograph
15 x 11 in.
Edition of 26, portfolio of 12



AARON SPANGLER
Sculpture Park, 2006
Woodcut using silver ink on Arches cover
black
24 1/2 x 36 in
Edition of 26

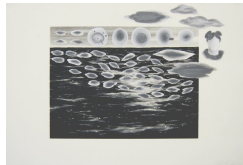


CATHERINE OPIE
O, 1999
Photogravure
18 1/2 x 14 in
Edition of 26, portfolio of 7



ANDREA ZITTEL
A-Z Sorting Trays, 2001
Finland Birch
Dimensions Vary
14 designs, Edition of 7, with color variation

GALLERY II



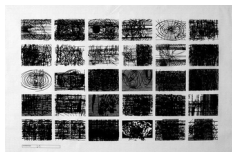
ROBYN O'NEIL
Mother #13, 2012
Hand coloring with collage on stone
lithograph, unique
15 3/8 x 22 1/2 in.
(RO0039)



ROBYN O'NEIL
Mother #19, 2012
Hand coloring with collage on stone
lithograph, unique
15 3/8 x 22 1/2 in.
(RO0041)



PHILIP TAAFFE
Molossus, Cernunno, Acerodonti, 2007
Archival inkjet on Somerset
14 x 10 1/2 in.
Edition of 35, portfolio of 3.



TERRY WINTERS
Location Plan, 2000
Screenprint
26 x 41 in
Edition of 100



BRUCE CONNER
Take Two, D.H.O.M.S., Volume I, 1973/2001
Etching
18 1/4 x 14 1/4 in.
Edition of 12, Portfolio of 8

OFFICE



BARBARA KRUGER
You're Right, 2010
Lithograph
9 x 24 in.
Edition of 200



FRED TOMASELLI
Bloom, 2011
Screenprint over archival inkjet
14 x 12 in
Edition of 200



DANA SCHUTZ
Backstroke, 2012
Three color woodblock with one color photo-
litho on Coventry paper
17 3/4 x 12 1/4 in
Edition of 25