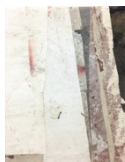


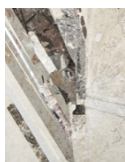
RYAN WALLACE: Slo Crostic
23 October 2014 – 6 December 2014



RYAN WALLACE
Untitled XVI, 2014
Enamel, pigment, cold wax, tape, vinyl, aluminum, paper and
canvas/canvas
30 x 23 in.
(RW0043)



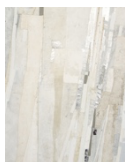
RYAN WALLACE
Untitled XV, 2014
Enamel, pigment, cold wax, tape, vinyl, aluminum, paper and
canvas/canvas
30 x 23 in.
(RW0042)



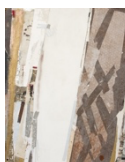
RYAN WALLACE
Untitled XIV, 2014
Enamel, pigment, acrylic, Rockite, plaster, vinyl, aluminum, tape,
canvas on canvas
30 x 23 in
(RW0031)



RYAN WALLACE
Untitled XVII, 2014
Enamel, pigment, cold wax, tape, vinyl, aluminum, paper and
canvas/canvas
30 x 23 in.
(RW0044)



RYAN WALLACE
Redactor XIV, 2014
Enamel, pigment, acrylic, Rockite, plaster, vinyl, aluminum, tape,
canvas on canvas
72 x 60 in.
(RW0030)



RYAN WALLACE
Redactor XVII, 2014
Enamel, pigment, cold wax, tape, vinyl, aluminum, paper and
canvas/canvas
72 x 60 in.
(RW0037)



RYAN WALLACE
Redactor XIII, 2014
Enamel, pigment, cold wax, tape, vinyl, aluminum, paper and
canvas/canvas
72 x 60 in.
(RW0035)



RYAN WALLACE

Redactor XVIII, 2014

Enamel, pigment, cold wax, rubber, tape, vinyl, aluminum, paper and canvas/canvas

72 x 60 in.

(RW0038)



RYAN WALLACE

Redactor XXII, 2014

Enamel, acrylic, powdered graphite, glass powder, cold wax, pigment, lead, aluminum, tape, fabric, vinyl on canvas

84 x 120 in.

(RW0028)



RYAN WALLACE

Croistics, 2014

Enamel, acrylic, powdered graphite, glass powder, cold wax, pigment, lead, aluminum, tape, fabric, vinyl, canvas, Rockite, Hydrocal, plaster

10 x 10 x 10 in. each (76 pieces) 110 x 110 in. floor

(RW0046)



RYAN WALLACE

Double Crostic, 2014

Enamel, acrylic, powdered graphite, glass powder, cold wax, pigment, lead, aluminum, tape, fabric, vinyl, canvas, Rockite, Hydrocal, plaster, Plexiglas, staples and metal

45 x 14 1/2 x 14 1/2 in.

(RW0045)