

## AMERICAN BEAUTY

Curated by William Villalongo

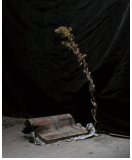
12 December 2013 – 1 February 2014

### WINDOW



NAOMI REIS  
*Borrowed Landscape II (Tropics of Africa, Asia and the Amazon via Brooklyn)*, 2013  
Digital print on vinyl, mixed media collage on paper in frame  
Dimensions variable  
(NR0001)

### RECEPTION

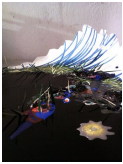


MICHAEL VAHRENWALD  
Untitled, 2013  
Archival inkjet print  
24 x 30 in.  
Edition 2/5  
(MV0002)

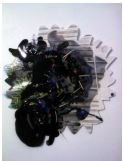
### GALLERY I



MICHAEL VAHRENWALD  
Untitled, 2013  
Archival inkjet print  
40 x 50 in.  
Edition 2/5  
(MV0001)



NICOLE AWAI  
*Vista 1 – Curling*, 2013  
Graphite, acrylic paint, paper, nail polish, resin, filter charcoal,  
paper/synthetic paper  
22 x 20 in.  
(NW0001)



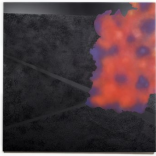
NICOLE AWAI  
*Vista 2 – Where is Joe?*, 2013  
Graphite, acrylic paint, paper, nail polish, resin, filter charcoal on  
synthetic paper  
19 x 21 in.  
(NW0002)



NICOLE AWAI  
*Vista 3 – Emerging Properties A*, 2013  
Acrylic paint, paper, nail polish, resin, vinyl, filter charcoal, nylon mesh  
on synthetic paper  
25 x 28 in.  
(NW0003)



ALEJANDRO GUZMAN  
*The Fatalist*, 2013  
Wood, screws, chicken wire, casters, plastic, silicone, foam, plaster,  
coroplast, mirrors, glitter, crystals, aluminum, copper, brass, bamboo,  
nKisi head figure, Nok beads, polish beads, clothes, fabric trim, oil  
paint, ink on paper, rabbit fur, elephant tusk, bull horns  
42 x 24 x 90 in.  
(AGZ001)



RICO GATSON  
*Watts Painting #4*, 2011  
Paint and glitter on wood panel  
48 x 48 in.  
(RG0001)



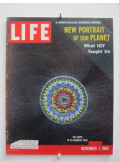
SUNTEK CHUNG  
*For what will they be for?*, 2013  
Bronze  
7 ½ x 6 x 9 ½ in.  
Edition of 3  
(SKC001)



MATTHEW DAY JACKSON  
*Domestic Drawing (LIFE, April 11, 1969)*, 2013  
Life Magazine cover needlepointed by artist's mother Karen Jackson  
13 ½ x 10 ½ x ¼ in.  
(MDJ002)



MATTHEW DAY JACKSON  
*Domestic Drawing (LIFE, May 1, 1964)*, 2013  
Life Magazine cover needlepointed by artist's mother Karen Jackson  
13 ½ x 10 ½ x ¼ in.  
(MDJ001)



MATTHEW DAY JACKSON  
*Domestic Drawing (LIFE, November 7, 1960)*, 2013  
Life Magazine cover needlepointed by artist's mother Karen Jackson  
13 ½ x 10 ½ x ¼ in.  
(MDJ003)



NATHANIEL MARY QUINN  
*Wretched*, 2013  
Black charcoal, gouache, oil pastel/Lenox paper  
50 x 38 in.  
(NMQ002)



DAWIT L. PETROS  
*Quadruple Cube Formation, No. 1, Saskatoon, SK*, 2011  
Archive digital print  
30 x 36 in.  
Edition 1/5  
(DLP004)



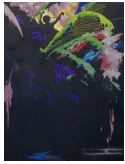
DAWIT L. PETROS  
*Single Cube Formation, No. 2, Santa Barbara, CA*, 2011  
Archive digital print  
30 x 36 in.  
Edition 2/5  
(DLP002)



DAWIT L. PETROS  
*Single Cube Formation, No. 3, Marfa, TX*, 2011  
Archive digital print  
30 x 36 in.  
Edition 2/5  
(DLP001)



DAWIT L. PETROS  
*Single Cube Formation, No. 4, Nazareth, Ethiopia, 2011*  
Archive digital print  
30 x 36 in.  
Edition 2/5  
(DLP003)



MARK THOMAS GIBSON  
*The Death of Benjamin Franklin, 2013*  
Acrylic and glitter/canvas  
80 x 60 in.  
(MTG001)



MAREN HASSINGER  
*Pink Sky, 2013*  
Pink plastic, shopping bags inflated with human breath and a love note inside  
Dimensions variable  
(MH0001)

## GALLERY II



ARIEL JACKSON  
*Here's hoping AKA The Blues (Episode 1), 2013*  
Stop-motion animation and greenscreen  
7:30 Min.  
(AJ0002)



ARIEL JACKSON  
*Vanity Pillow, 2013*  
Recycled fabric, stuffing, plywood and bedding  
43 x 60 x 56 in.  
(AJ0001)

## PRIVATE VIEW



WILLIAM VILLALONGO  
*Bathing Nymph, 2009*  
Acrylic paint, paper and velvet flocking on wood panel  
47 1/2 x 30 x 3/4 in  
(WV0030)



WILLIAM VILLALONGO  
*Nymph #26, 2012*  
Acrylic, velvet flocking/paper  
Sheet 12 x 9 in  
Frame 15 x 12 in  
(WV0052)



WILLIAM VILLALONGO  
*Nymph #28, 2012*  
Acrylic and velvet flocking/paper  
12 x 9 in. Sheet  
15 x 12 in. Framed  
(WV0054)



WILLIAM VILLALONGO  
*Nymph #29, 2012*  
Acrylic and velvet flocking/paper  
Sheet 12 x 9 in  
Frame 15 x 12 in  
(WV0055)



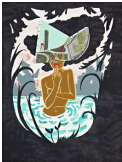
WILLIAM VILLALONGO  
*Nymph #20*, 2012  
Acrylic and velvet flocking/paper  
Sheet 12 x 9 in  
Frame 16 1/2 x 13 1/2 in  
(WV0081)



WILLIAM VILLALONGO  
*Nymph #52*, 2012  
Acrylic and velvet flocking/paper  
Sheet 12 x 9 in  
Frame 16 1/2 x 13 1/2 in  
(WV0063)



WILLIAM VILLALONGO  
*Nymph #63*, 2012  
Acrylic and velvet flocking/paper  
Sheet 12 x 9 in  
Frame 16 1/2 x 13 1/2 in  
(WV0074)



WILLIAM VILLALONGO  
*Nymph #65*, 2012  
Acrylic and velvet flocking/paper  
Sheet 12 x 9 in  
Frame 16 1/2 x 13 1/2 in  
(WV0108)

OFFICE



MARCIA KURE  
*The Renate Series: The Mistress*, 2012  
Silver acrylic ink and watercolor / Arches HP Watercolor Paper, 300LB  
30 x 22 1/2 in. Sheet  
36 3/4 x 29 x 1 1/2 in. Framed  
(MK0064)



MARCIA KURE  
*TAC II, Object #7*, 2013  
Cotton fabric, cotton thread, faux fur, polyester fiber and silk fabric  
9 x 7 1/2 x 6 in.  
(MK0089)



MARCIA KURE  
*TAC I, Object #9*, 2013  
Antelope horn, black agate beads, clear crystal beads, craft wire 20 gauge,  
crimp beads and silver wire  
Horn (a) 2 x 23 1/2 in.  
Horn (b) 2 x 24 1/4 in.  
(MK0083)



MARCIA KURE  
*TAC II, Object #10*, 2013  
Faux fur, plastic pearls and thread  
7 x 12 x 3 in.  
(MK0088)