

MARCIA KURE
Tease
May – 15 June 2013

9

WINDOW:



MARCIA KURE
Unveiled, 2013
Faux fur, polyester filling, push pins, rug on laminated pine wood
and stuffed toys
48 x 60 x 11 in.
(MK0103)

RECEPTION



MARCIA KURE
Lampshade, 2013
Cotton thread, faux fur, lamp, metal, plastic, polyester, pushpins,
synthetic hair
21 x 17 x 12 in.
(MK0097)

GALLERY I



MARCIA KURE
The Mask and Saint Series II: (Hair and Cotton Candy), 2013
23.75kt Shell gold, Kolanut pigment, silver ink, pencil and
watercolor / Arches HP Watercolor Paper, 300LB
22 1/2 x 18 in. Sheet
29 1/2 x 24 x 1 1/2 in. Framed
(MK0066)



MARCIA KURE
The Mask Series V: Mona Lisa, 2013
Collage / Arches HP Watercolor Paper, 300LB
22 1/2 x 18 in. Sheet
29 1/2 x 24 x 1 1/2 in. Framed
(MK0072)



MARCIA KURE
The Renate Series: Ménage à trois, 2013
23.75kt Shell gold, Kolanut pigment, pencil and watercolor / Arches
HP Watercolor Paper, 300LB
22 1/2 x 18 in. Sheet
29 1/2 x 24 x 1 1/2 in. Framed
(MK0063)



MARCIA KURE
Pod, 2013
Glazed ceramic
2 1/2 x 3 1/2 in (approx. each piece)
12 x 16 x 10 in. (Install)
(MK0096)



MARCIA KURE
The Renate Series: The Afronaut's Black Hole, 2013
Kolanut pigment, red wine, pencil and watercolor/ Arches HP
Watercolor Paper, 300LB
22 1/2 x 18 in. Sheet
29 1/2 x 24 x 1 1/2 in. Framed
(MK0062)



MARCIA KURE
The Mask Series III: Ancestor Undergoing Midlife Crisis I, 2013
Collage / Arches HP Watercolor Paper, 300LB
22 1/2 x 18 in. Sheet
29 1/2 x 24 x 1 1/2 in. Framed
(MK0070)



MARCIA KURE
The Mask and Saint Series I: (The Finger), 2013
Acrylic ink, Kolanut pigment, silver ink, snow and pencil / Arches HP
Watercolor Paper, 300LB
22 1/2 x 18 in. Sheet
29 1/2 x 24 x 1 1/2 in. Framed
(MK0065)

THE ANTHROPOLOGIE CABINET II



MARCIA KURE
TAC II, Object #1, 2013
Acrylic paint, faux fur, polyester fiber, thread and wood 21 x 10 x 10
in.
(MK0101)



MARCIA KURE
TAC II, Object #3, 2013
Glass
7 1/2 x 6 x 6 in.
(MK0092)



MARCIA KURE
TAC II, Object #4, 2013
Cotton thread, faux fur, ink, plastic, plastic pellets, polyester fiber
and synthetic hair
7 1/2 x 12 x 6 in
(MK0085)



MARCIA KURE
TAC II, Object #5, 2013
Cotton thread, faux fur, raw silk fabric, silk thread and synthetic hair
4 1/2 x 12 x 12 in.
(MK0090)



MARCIA KURE
TAC II, Object #6, 2013
Glazed ceramic
10 1/2 x 5 in.
11 x 4 1/2 in.
(MK0100)



MARCIA KURE
TAC II, Object #7, 2013
Cotton fabric, cotton thread, faux fur, polyester fiber and silk fabric
9 x 7 1/2 x 6 in.
(MK0089)



MARCIA KURE
TAC II, Object #8, 2013
Glazed ceramic and synthetic hair
9 x 5 x 5 in.
(MK0099)



MARCIA KURE
TAC II, Object #9, 2013
Cotton thread, faux fur, plastic pellets and polyester fiber
7 1/2 x 12 x 5 in.
(MK0084)



MARCIA KURE
TAC II, Object #10, 2013
Faux fur, plastic pearls and thread
7 x 12 x 3 in.
(MK0088)



MARCIA KURE
TAC II, Object #12, 2013
Cotton thread, faux fur, glass, metal stiffeners, plastic pellets and polyester fiber
10 x 9 x 9 in.
(MK0082)



MARCIA KURE
TAC II, Object #13, 2013
China plates, panty hose and porcelain
8 x 6 1/2 x 6 1/2 in.
(MK0095)



MARCIA KURE
The Renate Series: You Know Who and the Chambermaid VI, 2013
Kolanut pigment, silver acrylic, pencil and watercolor/ Arches HP
Watercolor paper
22 1/2 x 18 in. Sheet
29 1/2 x 24 x 1 1/2 in. Framed
(MK0061)

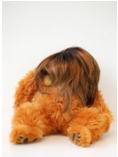
THE ANTHROPOLOGIE
CABINET I



MARCIA KURE
TAC I, Object #1, 2013
Cotton thread, faux fur, plastic pellets, polyester fiber and synthetic hair
3 x 15 x 12 in.
(MK0086)



MARCIA KURE
TAC I, Object #2, 2013
Glass
6 x 4 3/4 in.
(MK0105)



MARCIA KURE
TAC I, Object #3, 2013
Cotton thread, faux fur, plastic pellets, polyester fiber, synthetic hair
12 x 11 x 9 in.
(MK0087)



MARCIA KURE
TAC I, Object #4, 2013
Beads, glass
(a) 2 3/4 x 3 1/2 in.
(b) 2 1/2 x 3 in.
(c) 6 x 3 1/2 in.
(MK0106)



MARCIA KURE
TAC I, Object #5, 2013
Cotton thread, faux fur, plastic pellets, polyester fiber and wool pom- poms
3 1/2 x 8 x 3 in.
(MK0098)



MARCIA KURE
TAC I, Object #7, 2013
Cotton Thread, faux fur, plastic and Styrofoam
6 1/2 x 13 x 9 in.
(MK0093)



MARCIA KURE
TAC I, Object #8, 2013
Polyester fiber, glass and synthetic hair
6 x 6 x 10 in.
(MK0104)



MARCIA KURE
TAC I, Object #9, 2013
Antelope horn, black agate beads, clear crystal beads, craft wire 20 gauge, crimp beads and silver wire
Horn(a)2x23 1/2 in.
Horn(b)2x24 1/4 in.
(MK0083)



MARCIA KURE
TAC I, Object #10, 2013
Acrylic paint, faux fur, jute rope, metal colander, polyester fiber, and thread
12 x 11 x 9 in.
(MK0102)



MARCIA KURE
TAC I, Object #11, 2013
Cotton thread, faux fur, metal and polyester filling
7 x 12 x 6 in.
(MK0091)



MARCIA KURE
The Mask Series VI: Janus, 2013
Collage / Arches Watercolor Paper, 300LB
22 1/2 x 18 in. Sheet
29 1/2 x 24 x 1 1/2 in. Framed
(MK0073)



MARCIA KURE
The Mask Series II: Samurai, 2013
Collage / Arches HP Watercolor Paper, 300LB
22 1/2 x 18 in. Sheet
29 1/2 x 24 x 1 1/2 in. Framed
(MK0069)



MARCIA KURE
The Mask Series I: Cyborg, 2013
Collage / Arches HP Watercolor Paper, 300LB
22 1/2 x 18 in. Sheet
29 1/2 x 24 x 1 1/2 in. Framed
(MK0075)

GALLERY II



MARCIA KURE
Untitled, 2013
Cotton thread, faux fur, polyester filling and synthetic hair 24 x 20 x 8 in.
(MK0094)



MARCIA KURE
The Renate Series: The Mistress, 2012
Silver acrylic ink and watercolor / Arches HP Watercolor Paper, 300LB
30 x 22 1/2 in. Sheet
36 3/4 x 29 x 1 1/2 in. Framed
(MK0064)



MARCIA KURE
The Mask and Saint Series III: (Dilemma and The Void), 2013
Kolanut pigment, pencil and watercolor / Arches HP Watercolor
Paper, 300LB
22 1/2 x 18 in. Sheet
29 1/2 x 24 x 1 1/2 in. Framed
(MK0067)



MARCIA KURE
Black Bunny, 2012
Acrylic paint, chair, faux fur, panty hose, polyester fiber and thread
35 1/2 x 16 x 19 in.
(MK0078)

ADDITIONAL WORKS



MARCIA KURE
The Mask Series IV: Ancestor Undergoing Midlife Crisis II, 2013
Collage / Arches HP Watercolor Paper, 300LB
22 1/2 x 18 in. Sheet
29 1/2 x 24 x 1 1/2 in. Framed
(MK0071)



MARCIA KURE
The Mask Series VII: The Bearded Woman, 2013
Collage / Arches HP Watercolor Paper, 300LB
22 1/2 x 18 in. Sheet
29 1/2 x 24 x 1 1/2 in. Framed
(MK0074)

PRIVATE VIEW



ERIC FERTMAN
Bird Pissing in Space, 2013
Ash, stain, stainless steel
80 x 31 x 7 in.
(EF0130)



ERIC FERTMAN
Jackal, 2012
Black stained oak
24 x 13 x 10 in
(EF0110)

OFFICE



ALLISON MILLER
Bulletin, 2011
Acrylic and oil/canvas
40 x 40 in
(AM0011)