

## MAREN HASSINGER: *We Are All Vessels*

29 April 2021 – 12 June 2021

### GALLERY I



MAREN HASSINGER  
*Untitled Vessel (Beige), 2021*  
Stretch polyester fabric on steel armature  
Armature fabricated by Michael Benevenia  
60 x 24 in. (diameter)  
(MH0236)



MAREN HASSINGER  
*Untitled Vessel (Small Body), 2021*  
Stainless steel wire rope on steel armature  
Armature fabricated by Michael Benevenia  
48 x 31 in. (diameter)  
(MH0237)



MAREN HASSINGER  
*Untitled Vessel (Red), 2021*  
Stretch polyester fabric on steel armature  
Armature fabricated by Michael Benevenia  
69 x 61 in. (diameter)  
(MH0234)



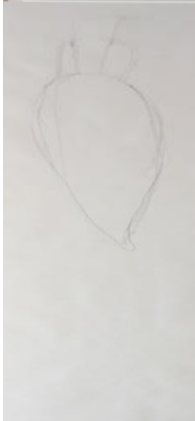
MAREN HASSINGER  
*Amphora II, 2021*  
Graphite on paper  
88 x 42 in. Sheet  
92 3/4 x 46 5/8 x 2 1/2 in. Frame  
(MH0233)



MAREN HASSINGER  
*Untitled Vessel (Brown), 2021*  
Stretch polyester fabric on steel armature  
Armature fabricated by Michael Benevenia  
67 x 21 in. (diameter)  
(MH0235)



MAREN HASSINGER  
*Untitled Vessel (Large Body), 2021*  
Stainless steel wire rope on steel armature  
Armature fabricated by Michael Benevenia  
67 x 54 1/2 in. (diameter)  
(MH0238)



MAREN HASSINGER  
*Amphora I, 2021*  
Graphite on paper  
88 x 42 in. Sheet  
92 3/4 x 46 5/8 x 2 1/2 in. Frame  
(MH0232)

## OFFICE



MAREN HASSINGER  
*Tree Duet I, 5617 San Vicente Blvd, Los Angeles, c. 1974/2021.*  
Photograph by Adam Avila  
Silver gelatin print  
20 x 30 in.  
Edition of 5, 2 AP  
(MH0239)



MAREN HASSINGER  
*Tree Duet II, 5617 San Vicente Blvd, Los Angeles, c. 1974/2021*  
Photograph by Adam Avila  
Silver gelatin print  
20 x 30 in.  
Edition of 5, 2 AP  
(MH0240)

## GALLERY II



BAT-AMI RIVLIN  
*Untitled (fence, trash bag), 2021*  
Fence, trash bag  
24 x 24 x 12 in.  
(BAR001)



CATHERINE FELIZ  
*Untitled (for We Are All Vessels)*, 2020  
Paper mache and wire  
25 x 6 x 6 1/2 in.  
(FZC001)

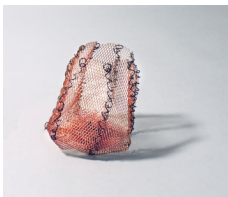


BAT-AMI RIVLIN  
*Untitled (vacuum bag, leak seal)*, 2021  
Vacuum bag, leak seal spray  
16 x 19 x 2 in.  
(BAR002)

## RECEPTION



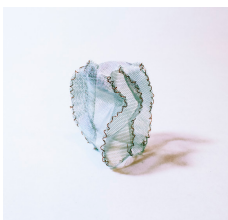
JOSHUA LEFF  
*Untitled Vessel (7)*, 2021  
Aluminum mesh  
3 x 3 x 3 in.  
(JL0007)



JOSHUA LEFF  
*Untitled Vessel (9)*, 2021  
Steel and aluminum wire, copper mesh  
3 x 3 x 3 in.  
(JL0016)



JOSHUA LEFF  
*Untitled Vessel (5)*, 2021  
Steel and aluminum wire, copper mesh  
5 x 3 2 1/2 in.,  
(JL0003)



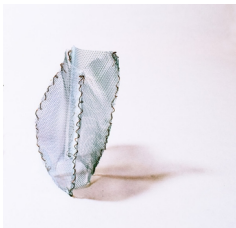
JOSHUA LEFF  
*Untitled Vessel (13)*, 2021  
Copper and steel wire, aluminum alloy and copper meshes  
5 x 4 x 4 in., 4 1/2 x 2 x 3 in.  
(JL0008)



JOSHUA LEFF  
*Untitled Vessel (11)*, 2021  
Copper and steel wire, aluminum alloy and copper meshes  
4 1/2 x 2 x 3 in.  
(JL0015)



JOSHUA LEFF  
*Untitled Vessel (12)*, 2020  
Steel wire and copper mesh  
3 x 2 x 2 in  
(JL0011)



JOSHUA LEFF  
*Untitled Vessel (15)*, 2021  
Copper and steel wire, aluminum alloy mesh  
5 x 2 1/2 x 2 in.  
(JL0009)



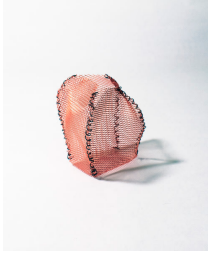
JOSHUA LEFF  
*Untitled Vessel (8)*, 2021  
Steel and copper wire, aluminum and copper mesh  
5 x 3 x 3 in.  
(JL0014)



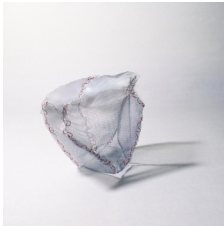
JOSHUA LEFF  
*Untitled Vessel (2)*, 2021  
Steel and copper wire, aluminum and copper mesh  
6 x 5 x 5 in.  
(JL0013)



JOSHUA LEFF  
*Untitled Vessel (3)*, 2021  
Steel and copper wire, aluminum and copper mesh  
5 x 3 x 3 in.  
(JL004)



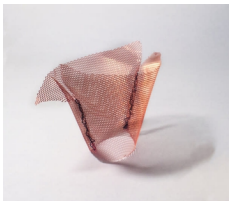
JOSHUA LEFF  
*Untitled Vessel (4)*, 2021  
Steel and copper wire, aluminum and copper mesh  
4 x 3 x 3 in.  
(JL0012)



JOSHUA LEFF  
*Untitled Vessel (1)*, 2021  
Steel and copper wire, aluminum and copper mesh  
5 x 7 1/2 x 5 in.  
(JL0001)



JOSHUA LEFF  
*Untitled Vessel (6)*, 2021  
Steel wire, copper and copper alloy mesh  
1 1/2 x 2 1/2 x 2 1/2 in.  
(JL0017)



JOSHUA LEFF  
*Untitled Vessel (10)*, 2021  
Steel wire, copper and copper alloy mesh  
6 x 6 x 5 1/2 in.  
(JL0002)



JOSHUA LEFF  
*Untitled Vessel (14)*, 2021  
Steel wire, copper mesh  
2 1/2 x 2 1/2 x 2 in.  
(JL0010)