

# ALAIN KIRILI: Who's Afraid of Verticality?

12 September 2019 – 19 October 2019

## Gallery I



ALAIN KIRILI  
*Belur*, 1984  
Painted forged iron  
6 7/8 x 4 1/2 x 4 in.  
(AK010)



ALAIN KIRILI  
Untitled, 2009  
Forged iron and clay  
17 1/4 x 5 1/2 x 5 1/2 in.  
(AK011)



ALAIN KIRILI  
*Tefila*, 1984  
Forged iron  
8 x 8 x 6 in.  
(AK012)



ALAIN KIRILI  
Untitled, 1983  
Forged iron  
13 1/2 x 5 x 5 in.  
(AK009)



ALAIN KIRILI  
*Ascension II*, 2018  
Forged iron on painted yellow, gray and pink wall  
141 3/8 x 143 1/2 x 4 in. overall  
122 1/2 x 17 1/8 in. (each stripe)  
124 x 10 1/2 x 3 3/4 in. (L)  
122 1/2 x 16 x 3 1/4 in. (C)  
111 1/4 x 17 3/4 x 4 in. (R)  
(AK001)



ALAIN KIRILI  
~~*In the Round II*, 2015~~ *In the Round I*, 2015  
Forged iron  
78 1/4 x 42 1/4 x 24 in.  
(AK004)



ALAIN KIRILI  
*Forge*, 2010/2019  
Forged iron and coal  
100 x 30 in. dia.  
(AK008)



ALAIN KIRILI  
*Adam III*, 2010  
Painted forged iron and Hydrocal plaster  
82 1/4 x 20 x 16 in.  
(AK002)



ALAIN KIRILI  
*Segou*, 2004  
Forged iron  
98 1/4 x 11 1/4 x 11 7/8 in.  
(AK003)



ALAIN KIRILI  
*Totem*, 2004  
Copper  
31 1/2 x 7 1/8 x 5 in.  
(AK005)



ALAIN KIRILI  
*Totem*, 2004  
Iron  
36 1/2 x 8 x 8 in.  
(AK006)



ALAIN KIRILI  
*Tellem II*, 2000  
Forged iron, sand blasted  
64 1/4 x 18 x 18 in.  
(AK007)

Gallery II



SHAUN O'DELL  
*10. Painting*, 2015  
Gouache and acrylic ink on paper mounted to canvas  
on panel  
30 1/4 x 22 in.  
(SO0086)



SHAUN O'DELL  
*TBT (Blue Round)*, 2016  
Gouache and acrylic ink on paper mounted on  
canvas mounted on panel  
30 x 22 in.  
(SO0089)

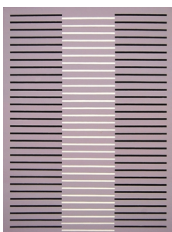


SHAUN O'DELL  
*Sound of Suggestions From Between Forms*, 2016  
Gouache and acrylic ink on paper mounted on  
canvas mounted on panel  
30 x 22 in.  
(SO0102)

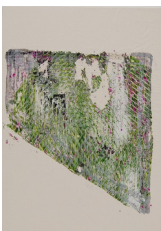
Private View



SHAUN O'DELL  
*Waterfall (Frozen)*, 2016  
Inkjet and acrylic on canvas  
39 1/2 x 31 1/2 in.  
(SO0091)



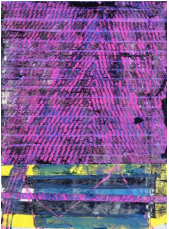
SHAUN O'DELL  
*Grey Falls*, 2016  
Gouache and acrylic ink on paper mounted on  
canvas mounted on panel  
30 x 22 in.  
(SO0092)



SHAUN O'DELL  
*Was Gold Too*, 2013  
Gouache, acrylic ink and glue on glassine mounted  
on canvas on panel  
30 x 22 in.  
(SO0104)



SHAUN O'DELL  
*brkn.grfik*, 2014  
Gouache and acrylic ink on paper mounted on  
canvas mounted on panel  
24 x 20 in.  
(SO0071)



SHAUN O'DELL  
*videomix.sm*, 2013  
Gouache on paper mounted on canvas mounted on  
panel  
29 3/4 x 22 in.  
(SO0066)



SHAUN O'DELL  
*Some Old Tangle*, 2016  
Gouache and acrylic ink on paper mounted on  
canvas mounted on panel  
30 x 22 in.  
(SO0099)

#### Office



ROBYN O'NEIL  
*Paul Benedict's Primary Battle (No Numbers)*, 2019  
Graphite, colored pencil and acrylic on paper  
23 x 30 in. Sheet  
25 3/4 x 32 3/4 in. Frame  
(RO0168)