

ALLISON MILLER: *Upside Down Pyramid*

11 March 2021 – 24 April 2021

GALLERY I



ALLISON MILLER  
*Violet*, 2021  
Oil, oil stick, acrylic, and colored pencil on canvas  
56 (height) x 45 1/2 (top width) x 58 1/2 (bottom width) in.  
(AM0147)



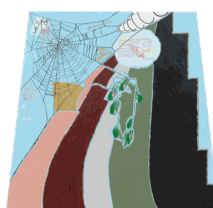
ALLISON MILLER  
*Snow*, 2021  
Oil and acrylic on canvas  
56 (height) x 45 1/2 (top width) x 58 1/2 (bottom width) in.  
(AM0146)



ALLISON MILLER  
*Mirror*, 2021  
Oil stick, acrylic, and fabric on canvas  
56 (height) x 45 1/2 (top width) x 58 1/2 (bottom width) in.  
(AM0148)



ALLISON MILLER  
*Natural*, 2021  
Oil stick and acrylic on canvas  
56 (height) x 45 1/2 (top width) x 58 1/2 (bottom width) in.  
(AM0151)



ALLISON MILLER  
*Skyscraper*, 2021  
Oil stick, acrylic, and ribbon on canvas  
56 (height) x 45 1/2 (top width) x 58 1/2 (bottom width) in.  
(AM0149)

GALLERY II



ALLISON MILLER  
*Cameo*, 2021  
Oil, oil stick, and acrylic on canvas  
56 (height) x 45 1/2 (top width) x 58  
1/2 (bottom width) in.  
(AM0150)

VIEWING ROOM



RYAN WALLACE  
*The Unanimous Hour IX*, 2020  
Enamel, acrylic, canvas, linen,  
aluminum, copper and fiberglass  
48 x 60 in.  
50 x 62 in. framed  
(RW0241)



RYAN WALLACE  
*The Unanimous Hour III*, 2020  
Oil, enamel, acrylic, canvas,  
aluminum, fiberglass tape on  
canvas  
48 x 36 in.  
50 x 38 in. framed  
(RW0235)

OFFICE



CHANNING HANSEN  
*Thomas*, 2020  
California Variegated Mutant (Odelia),  
California Variegated Mutant (Olive),  
Coopworth/Texel (Anise), Gotland  
(0343), Leicester Longwool, Lionhead  
(Beatrix & Derek), Romedale  
(Quenby), Romedale (Rascal),  
Shetland (Selah), and Shetland  
(Selene) fibers; silk noils, and Tussah  
silk; holographic polymers; bamboo  
carbon fiber and Sequoioideae  
Redwood  
42 x 35 1/4 in.  
(CH0009)